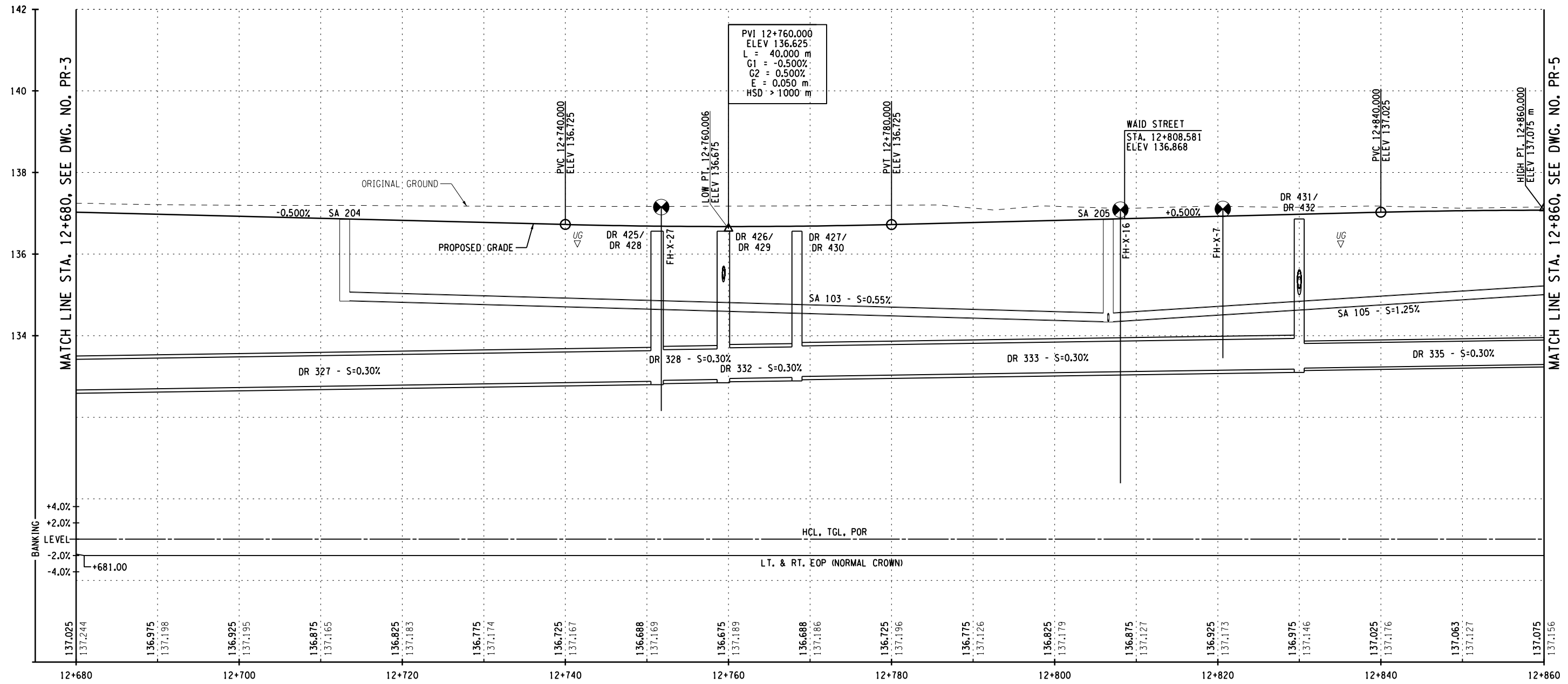


It is a violation of law for any person, unless they are acting under the direction of a licensed Professional Engineer, Architect, Landscape Architect, or Land Surveyor, to alter an item in any way. If an item bearing the stamp of a Licensed Professional is altered, the altering Engineer, Architect, Landscape Architect or Land Surveyor shall stamp the document and include the notation "Altered By" followed by their signature, the date of such alteration, and a specific description of the alteration.

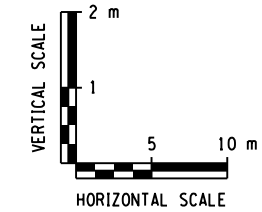
DESIGN SUPERVISOR: J. FESTA  
 JOB MANAGER: G. ROY  
 DESIGNED BY: D. ALTERI  
 CHECKED BY: G. ROY  
 ESTIMATED BY: S. ST. LOUIS  
 DRAFTED BY: M. FLORELL  
 CHECKED BY: G. ROY



FILE NAME = 714331\_cph\_pro\_04.dgn  
 DATE/TIME = 1/4/2013 10:58:11  
 USER = mflorell

PREPARED BY: GREGORY A. ROY  
 ON: DECEMBER 31, 2012

ALTERED BY:  
 ON:



AS BUILT REVISIONS DESCRIPTION OF WORK:	S.H. 5331 - GOUVERNEUR VILLAGE	PIN 7143.31 US RTE 11/NY RTE 812 PS&E DATE	BRIDGES	CULVERTS	ALL DIMENSIONS IN m UNLESS OTHERWISE NOTED	CONTRACT NUMBER
	S.H. 5283 - GOUVERNEUR - DEKALB					D262301
SIGNATURE _____	DATE _____	COUNTY: ST. LAWRENCE	PROFILE US ROUTE 11 STA. 12+680 TO STA. 12+860		DRAWING NO. PR-4 SHEET NO. 77	
DOCUMENT NAME: 714331_cph_pro_04.dgn						NEW YORK STATE DEPARTMENT OF TRANSPORTATION REGION 7

