

WALDEN AVENUE LEFT TURN LANE

WALDEN AVENUE AT PROPOSED JUNIPER BOULEVARD TOWN OF LANCASTER, COUNTY OF ERIE, STATE OF NEW YORK

UTILITY COMPANIES

CABLE TV

TIME WARNER CABLE
1700 COMMERCE PARKWAY
LANCASTER, NEW YORK 14086
PHONE: (716) 651-4111

ELECTRIC

NEW YORK STATE ELECTRIC AND GAS
150 ERIE STREET
LANCASTER, NEW YORK 14086
PHONE: (716) 651-5315

GAS

NATIONAL FUEL GAS DISTRIBUTION CORPORATION
ENGINEERING DEPT.
6363 MAIN STREET
WILLIAMSVILLE, NEW YORK 14221
PHONE: (716) 857-7076

SANITARY SEWER

ERIE COUNTY DEPARTMENT OF
SEWERAGE MANAGEMENT
95 FRANKLIN STREET
BUFFALO, NEW YORK 14202
PHONE: (716) 858-8760

STORM SEWER

NYSDOT REGIONAL OFFICE
NYSDOT
100 SENECA STREET
BUFFALO, NEW YORK 14203
PHONE: (716) 847-3268

TELEPHONE

VERIZON COMMUNICATIONS
65 FRANKLIN STREET
BUFFALO, NEW YORK 14202
PHONE: (716) 840-8698

WATER

ERIE COUNTY WATER AUTHORITY
3030 UNION ROAD
CHEEKTOWAGA, NEW YORK 14227
PHONE: (716) 685-8219

APPROVAL AGENCIES

STATE

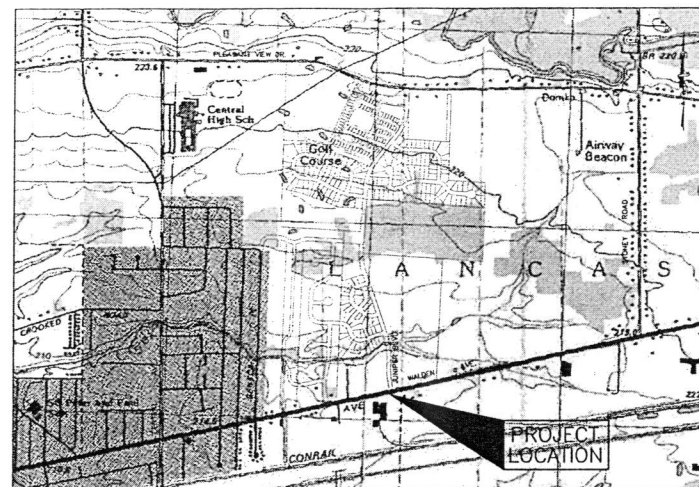
NYSDOT REGIONAL OFFICE
NYSDOT
100 SENECA STREET
BUFFALO, NEW YORK 14203
ATTN: THOMAS S. MESSANA, P.E.
PHONE: (716) 847-3268

NYSDOT RESIDENCY
NYSDOT
111 INDIAN ROAD
DEPEW, NEW YORK 14043
ATTN: DAVID R. CHRISTOPHER, P.E.
PHONE: (716) 683-3476

DESIGN CONSULTANT

ENGINEER AND SURVEYOR

GREENMAN-PEDERSEN, INC.
4950 GENESEE STREET
SUITE 165
BUFFALO, NEW YORK 14225
PHONE: (716) 633-4844



LOCATION MAP
N.T.S.

PROJECT DESCRIPTION

THIS PROJECT IS LOCATED ON NEW YORK STATE ROUTE 9520 (WALDEN AVENUE). THE PROPOSED IMPROVEMENTS INCLUDE THE CONSTRUCTION OF AN EASTBOUND LEFT TURN LANE ON WALDEN AVENUE INTO PLEASANT MEADOWS DEVELOPMENT (PROPOSED JUNIPER BOULEVARD).

GREENMAN-PEDERSEN INC. IS RESPONSIBLE FOR THE DESIGN OF THIS PROJECT AND IS FAMILIAR WITH NEW YORK STATE DEPARTMENT OF TRANSPORTATION (NYSDOT) STANDARDS AND REQUIREMENTS AND SHALL BE CONTACTED AT (716) 633-4844 TO RESOLVE ISSUES OR PROBLEMS DURING CONSTRUCTION. ALL REVISIONS, INCLUDING THOSE NECESSARY DUE TO FIELD CONDITIONS, SHALL BE APPROVED BY NYSDOT PRIOR TO IMPLEMENTATION IN THE FIELD.

MAINTENANCE JURISDICTION

NEW YORK STATE ROUTE 9520 (WALDEN AVENUE) IS OWNED AND MAINTAINED BY NYSDOT. JUNIPER BOULEVARD IS/ WILL BE OWNED AND MAINTAINED BY THE TOWN OF LANCASTER. THE ABOVE OWNERSHIP AND MAINTENANCE RESPONSIBILITIES FOR THE EXISTING FACILITIES AND RESPECTIVE IMPROVEMENTS TO THE EXISTING FACILITIES INCLUDED IN THESE PLANS WILL REMAIN THE SAME AFTER COMPLETION OF THIS PROJECT.

ALL EXISTING SANITARY SEWERS AND OTHER SEWERS AND PUBLIC UTILITIES ALONG PUBLIC HIGHWAYS WITHIN THE PROJECT LIMITS NOT DEEMED TO BE A PART OF THE PROJECT, INCLUDING WATER LINES, HYDRANTS, AND OTHER MUNICIPALLY OR PRIVATELY OWNED FACILITIES WITHIN THE LIMITS OF THE HIGHWAY RIGHT-OF-WAY, WHICH REMAIN IN SERVICE UNCHANGED, AND ALL SUCH FACILITIES UNDER THE PROJECT, WHETHER CROSSING, LOCATED WITHIN, OR ADJACENT TO THE PUBLIC RIGHT-OF-WAY SHALL BE MAINTAINED AS THE CASE MAY BE BY THE AGENCY OR UNIT OWNING OR HAVING CONTROL AND JURISDICTION THEREOF AT NO COST OR EXPENSE TO THE STATE OF NEW YORK.

THE CONSTRUCTION OF IMPROVEMENTS WITHIN THE PUBLIC STREET RIGHT-OF-WAY AS SHOWN ON THESE PLANS WILL BE IMPLEMENTED UNDER A "HIGHWAY WORK PERMIT" WITH NYSDOT AND ERIE COUNTY DEPARTMENT OF PUBLIC WORKS.

STANDARD SPECIFICATIONS

ALL WORK CONTEMPLATED UNDER THIS PROJECT IS TO BE COVERED BY AND IN CONFORMANCE WITH THE NYSDOT STANDARD SPECIFICATIONS, DATED MAY 1, 2008, AND ALL AMENDMENTS ("STANDARD SPECIFICATIONS"), EXCEPT AS MODIFIED BY THESE PLANS AND ALL CONTRACT DOCUMENTS ("THE PLANS").

STANDARD SHEETS

THE LATEST UPDATE OF THE FOLLOWING NYSDOT STANDARD SHEETS ("STANDARD SHEETS") SHALL APPLY: 203-05, 209-01, 402-01, 604-02, 609-02, 619-02, 619-04, 619-10, 619-11, 619-12, 619-20, 619-30, 624-01, 645-03, 655-03, 655-04 & 685-01.

IN THE EVENT OF A CONFLICT BETWEEN THE STANDARD SHEETS AND THE PLANS, THE PLANS SHALL GOVERN.

DESIGN SPEEDS

THE DESIGN SPEED FOR THIS PROJECT IS 55 MPH ON WALDEN AVENUE.

DESIGN VEHICLE

THE DESIGN VEHICLE IS A WB-19 AS DEFINED IN THE AMERICAN ASSOCIATION OF STATE HIGHWAY TRANSPORTATION OFFICIALS (AASHTO) "GEOMETRIC DESIGN OF HIGHWAYS AND STREETS" ("GREEN BOOK"), 2004 (FIFTH EDITION).

INDEX OF DRAWINGS		
DWG. NO.	DESCRIPTION	SHEET NO.
T-1	TITLE SHEET AND INDEX	1 of 9
LA-1	LEGEND AND ABBREVIATIONS	2 of 9
PN-1	QUANTITIES AND PROJECT NOTES	3 of 9
TS-1	TYPICAL SECTIONS & TRAFFIC CONTROL	4 of 9
DT-1	DRAINAGE DETAILS	5 of 9
PL-1	PLAN	6 of 9
PL-2	PLAN AND PROFILE	7 of 9
SS-1	SIGNING AND STRIPING PLAN	8 of 9
SS-2	SIGNING AND STRIPING PLAN	9 of 9

RECORD PLAN

0.00 DENOTES RECORD INFORMATION

<p>GREENMAN-PEDERSEN, INC. CONSULTING ENGINEERS ENGINEERING • SURVEYING • PLANNING 1400 SHERIDAN STREET SUITE 100 BUFFALO, NY 14202 (716) 633-4844</p>	PREPARED BY 	
	DAVID F. PRATT, P.E. GREENMAN - PEDERSEN, INC.	

LEGEND

FEATURE	SYMBOL	
	PROPOSED	EXISTING
ROADS		
PAVED ROAD, SHLD., DWY. OR PARK LOT		
UNPAVED ROAD, SHLD., DWY. OR PARK LOT		
SIDEWALK		
CURB		
ROUTE MARKERS		
INTERSTATE		
STATE		
COUNTY		
TOWN		
U.S.		
GUIDERAIL OR BARRIER		
BARRICADE		
BOX BEAM OR "W" BEAM GUIDERAIL		
CABLE GUIDERAIL		
CONCRETE BARRIER		
RETAINING WALL		
GEOSYNTHETIC REINFORCED EARTH SYSTEM (PERMANENT)		
FENCE		
GUIDE POSTS		
ROCK WALL OR STONE FENCE		
DRAINAGE FACILITIES		
CULVERTS		
CATCH BASIN, ETC.		
TEE FIELD INLET		
LAWN DRAIN		
DITCHLINE		
GUTTER		
HEADWALL		
END SECTION		
WATER LOCATIONS		
STREAM OR RIVER		
LAKE OR POND		
DRY POND OR DRY STREAM		
SPRING		
MARSH OR SWAMP		
RIP-RAP		
TOPOGRAPHY		
CONTOURS		
ROCK OUTCROP		
DEPRESSION		

FEATURE	SYMBOL	
	PROPOSED	EXISTING
SURVEYING DATA		
SPOT ELEVATION		
WATER ELEVATION		
BENCHMARK		
BASELINE POINT		
PERMANENT SURVEY MARKER		
NORTH ARROW (MAGNETIC)		
BASELINE		
CENTERLINE		
CENTERLINE P.I.		
BUILDING & SPECIAL SITES		
BUILDINGS		
BUILDINGS TO BE REMOVED		
FOUNDATION		
CUT & FILL LIMITS		
TOP OF CUT		
BOTTOM OF FILL		
BOUNDARIES		
NATIONAL		
STATE		
COUNTY		
TOWN		
CITY OR VILLAGE		
PROPERTY LINE		
PROPERTY LINE MARKER		
ROW LINE & MON.		
PERMANENT EASEMENT		
TEMPORARY EASEMENT		
ACCESS LINE		
ACQUISITION INFO.		
TREES AND BRUSH		
TREE LINE		
BRUSH		
TREES, DECIDUOUS		
TREES, CONIFEROUS		
STUMP		
HEDGE		
SIGNS AND BILLBOARDS		
SIGNS, GROUND MOUNTED		
PROPOSED SIGN LOCATION AND TEXT		
SIGNS, OVERHEAD		

FEATURE	SYMBOL	
	PROPOSED	EXISTING
RAILROAD TRACKS		
SMALL SCALE		
LARGE SCALE		
UTILITY LINES		
UG = UNDERGROUND OH = OVERHEAD		
ELECTRIC		
TELEPHONE		
CABLE T.V.		
GAS		
WATER MAIN		
SEWER, SANITARY		
SEWER, STORM		
UTILITIES ABOVE GROUND		
HIGH TENSION TRANSMISSION TOWER		
UTILITY POLE		
TRAFFIC SIGNAL		
FIRE HYDRANT		
PULLBOX STREET LIGHTS		
PULLBOX TRAFFIC SIGNALS		
STREET LIGHT		
STEEL SIGNAL POLE		
SIGNAL POLE W/ CONTROLLER		
POLICE OR FIRE CALL BOX		
GUY WIRE W/ ANCHOR		
UTILITIES BELOW GROUND		
WATERLINE BLOW-OFF		
WATER VALVE		
MANHOLE		
UTILITY VALVE		
SUBSURFACE EXPLORATION		
STANDARD SYMBOL		

ABBREVIATIONS

TOPOGRAPHY (UTILITIES)

- E. = ELECTRIC
- G. = GAS
- G.P. = GUY POLE
- G.S.B. = GAS SERVICE BOX (HOUSE LINE)
- G.V. = GAS VALVE
- H.P.G. = HIGH PRESSURE GAS
- HYD. = HYDRANT
- L.P. = LIGHT POLE
- L.P.G. = LOW PRESSURE GAS
- P.P. = POWER POLE
- SA. = SANITARY SEWER
- ST. = STORM SEWER
- T. = TELEPHONE
- TEL. P. = TELEPHONE POLE
- TV. = CABLE TELEVISION
- W. = WATER
- W.S.B. = WATER SERVICE BOX (HOUSE SERVICE)
- W.V. = WATER VALVE (MAIN LINE)

TOPOGRAPHY (MISCELLANEOUS)

- ABUT. = ABUTMENT
- A.O.B.E. = AS ORDERED BY ENGINEER
- ASPH. = ASPHALT
- BDY. = BOUNDARY
- BLDG. = BUILDING
- B.M. = BENCH MARK
- BR. = BRIDGE
- BRK.HO. = BRICK HOUSE
- C.C. = CENTER TO CENTER
- CONC. = CONCRETE
- CONST. = CONSTRUCTION
- C.R. = COUNTY ROAD
- C.R.W. = CONCRETE RETAINING WALL
- D. = DEED DISTANCE
- D.M. = DIRECT MEASUREMENT
- DWY. = DRIVEWAY
- E.P. = EDGE OF PAVEMENT
- E.S. = EDGE OF SHOULDER
- F.P. = FENCE POST
- FND. = FOUNDATION
- F.L. = FENCE LINE
- FR. HO. = FRAME HOUSE
- GAR. = GARAGE
- GR. = GRAVEL
- HO. = HOUSE
- HWY. = HIGHWAY
- I.P. = IRON PIPE
- M. = MAP
- M.B. = MAIL BOX
- MON. = MONUMENT
- N&R = NAIL AND RED
- N&W = NAIL AND WASHER
- O.G. = ORIGINAL GROUND
- P. = PARCEL
- PAVT = PAVEMENT
- P.E. = PERMANENT EASEMENT
- R. = PROPERTY LINE
- POR. = PORCH
- RR. = RAILROAD
- RTE. = ROUTE
- R.O.W. = RIGHT OF WAY
- R.O.W. W/A = RIGHT OF WAY WITH ACCESS
- R.O.W. WO/A = RIGHT OF WAY WITHOUT ACCESS
- R.W. = RETAINING WALL
- S.H. = STATE HIGHWAY
- SHLD. = SHOULDER
- SPK. = SPIKE
- ST. = STREET
- STK. = STAKE
- STO. HO. = STONE HOUSE
- STY. = STORY
- S.W. = SIDEWALK
- T.E. = TEMPORARY EASEMENT
- T.L. = TREE LINE
- T.O. = TEMPORARY OCCUPANCY
- W.W. = WINGWALL

TOPOGRAPHY (DRAINAGE)

- B.B. = BOTTOM OF BANK
- B.C. = BOTTOM OF CURB
- B.O. = BOTTOM OF OPENING
- C.A.A.C. = CORRUGATED ALUMINIZED ARCH CULVERT
- C.A.P. = CORRUGATED ALUMINUM PIPE
- C.B. = CATCH BASIN
- C.I. = CURB INLET
- C.I.P. = CAST IRON PIPE
- CL. = CENTERLINE OF STREAM
- C.M.P. = CORRUGATED METAL PIPE
- C.P. = CONCRETE PIPE
- C.S.P. = CORRUGATED STEEL PIPE
- CULV. = CULVERT
- D.I. = DROP INLET
- D'XING = DITCH CROSSING
- E.H.W. = EXTREME HIGH WATER
- ELEV. OR EL. = ELEVATION
- E.L.W. = EXTREME LOW WATER
- E.S. = END SECTION
- F.I. = FIELD INLET
- F.L. = FLOW LINE
- H.D.P.E. = HIGH DENSITY POLYETHYLENE (PIPE)
- H.W. = HEADWALL
- INV. = INVERT
- M.H. = MANHOLE
- M.H.W. = MEAN HIGH WATER
- O.C.M.P. = OBLATE CORRUGATED METAL PIPE
- O.H.W. = ORDINARY HIGH WATER
- O.L.W. = ORDINARY LOW WATER
- P.C.S.P. = PERFORATED CORRUGATED STEEL PIPE
- P.H.D.P.E. = PERFORATED HIGH DENSITY POLYETHYLENE (PIPE)
- P.V.C. = POLYVINYL CHLORIDE (PIPE)
- R.C.P. = REINFORCED CONCRETE PIPE
- T.B. = TOP OF BANK (STREAM)
- T.C. = TOP OF CURB
- T.G. = TOP OF GRATE
- T.O. = TOP OF OPENING
- V.C.P. = VITRIFIED CLAY PIPE
- V.T.P. = VITRIFIED TILE PIPE

ALIGNMENT

- AH. = AHEAD
- AZ. = AZIMUTH
- BK. = BACK
- B. = BASELINE
- BRG. = BEARING
- C. = CENTERLINE
- C.S. = CURVE TO SPIRAL
- D. = DEGREE OF CURVE
- DIA. = DIAMETER
- E. MAX. = MAXIMUM SUPERELEVATION
- EQ. = EQUALITY
- EXT. = EXTERNAL
- H.C.L. = HORIZONTAL CONTROL LINE
- H.S.D. = HEADLIGHT SIGHT DISTANCE
- L. = LENGTH OF CIRCULAR CURVE
- L.S. = LENGTH OF SPIRAL
- L.V.C. = LENGTH OF VERTICAL CURVE
- M.C. = CENTER CORRECTION OF VERTICAL CURVE
- M.O. = MIDDLE ORDINATE OF VERTICAL CURVE
- N. = MAINLINE
- P.C. = POINT OF CURVATURE
- P.I. = POINT OF INTERSECTION
- P.O.L. = POINT ON LINE
- P.S.D. = PASSING SIGHT DISTANCE
- P.T. = POINT OF TANGENCY
- P.V.C. = POINT OF VERTICAL CURVE
- P.V.I. = POINT OF VERTICAL INTERSECTION
- P.V.T. = POINT OF VERTICAL TANGENT
- R. = RADIUS
- S.C. = SPIRAL TO CURVE
- S.S.D. = STOPPING SIGHT DISTANCE
- S.T. = SPIRAL TO TANGENT
- STA. = STATION
- T. = TANGENT
- T.G.L. = THEORETICAL GRADE LINE
- T.S. = TANGENT TO SPIRAL
- V.C. = VERTICAL CURVE

RECORD PLAN

0-00 0.00 DENOTES RECORD INFORMATION

Town of Lancaster
ERIE COUNTY NEW YORK
CITY JOB NO. _____

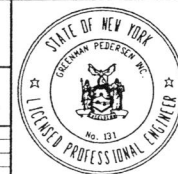
APPROVED BY: _____ DATE: _____

CITY ENGINEER _____

RECORD PLAN 07/09/13 GEB
REVISED AS PER N.Y.S.D.O.T. COMMENTS 08/15/12 SWS

DATE: _____ BY: _____

NOTE: UNAUTHORIZED ALTERATION OF ADDITION TO THIS DOCUMENT IS A VIOLATION OF SECTION 7209 PROVISION 2 OF THE NEW YORK STATE EDUCATION LAW.



Walden Avenue
At Juniper Boulevard Intersection

LEGEND AND ABBREVIATIONS

GPI
GREENMAN-PEDERSEN, INC.
CONSULTING ENGINEERS
ENGINEERING • SURVEYING • PLANNING
SOMEWHAT SERVICES PROVIDED BY OUR ENGINEERING AND SURVEYING LLP
4900 KENNEDY STREET SUITE 100 BUFFALO, NY 14225
(716) 833-4844 FAX (716) 833-4940

DRAWN: SWS JOB NO.: 201016 SHEET NO.: 2 OF 9
CHECKED: GEB DATE: JULY 2011
APPROVED: DFP SCALE: NONE LA-1

GENERAL NOTES

- 1) WARNING:
IT IS A VIOLATION OF THE NEW YORK STATE EDUCATION LAW FOR ANY PERSON, UNLESS ACTING UNDER THE DIRECTION OF A LICENSED PROFESSIONAL ENGINEER, TO ALTER AN ITEM ON THESE PLANS IN ANY WAY. IF ALTERATIONS TO THESE PLANS ARE REQUIRED, THE ALTERATIONS SHALL BE MADE IN ACCORDANCE WITH ARTICLE 145 - SUBSECTION 7209 OF THE NEW YORK STATE EDUCATION LAW.
- 2) ALL NEW YORK STATE DEPARTMENT OF TRANSPORTATION SPECIFICATIONS REFERRED TO HEREIN APPLY TO THE EDITION DATED MAY 1, 2008 INCLUDING THE LATEST REVISIONS.
- 3) LOCATIONS OF EXISTING UNDERGROUND UTILITIES AND STRUCTURES ARE SHOWN AS APPROXIMATE ONLY AND MAY NOT BE COMPLETE. LOCATIONS AND COMPLETENESS MUST BE VERIFIED IN THE FIELD PRIOR TO THE COMMENCEMENT OF ANY EXCAVATION. ASSISTANCE IN THIS MATTER MAY BE OBTAINED BY CONTACTING THE "UNDERGROUND FACILITIES PROTECTION ORGANIZATION" (1-800-963-7962) AND/OR THE AFFECTED UTILITY COMPANY(S).
- 4) WORK ZONE TRAFFIC CONTROL MUST COMPLY WITH THE "NATIONAL MANUAL OF TRAFFIC CONTROL DEVICES (MUTCD)", THE NEW YORK STATE SUPPLEMENT TO "THE NATIONAL MUTCD", THE "NYS DOT TEMPORARY TRAFFIC CONTROL MANUAL OF JANUARY 2010" AND BE IN ACCORDANCE WITH SECTION 619 - MAINTENANCE AND PROTECTION OF TRAFFIC OF THE STANDARD SPECIFICATIONS DATED MAY 1, 2008.
- 5) VEHICLES BELONGING TO THE CONTRACTOR OR HIS WORKMEN SHALL NOT BE PARKED ON THE PAVEMENT OR SHOULDERS ALONG THE ROADWAY BEING USED BY THE GENERAL PUBLIC. ADDITIONALLY, THE CONTRACTOR SHALL NOT PARK HIS EQUIPMENT OVERNIGHT OR STORE MATERIAL WHERE IT IS DEEMED BY THE ENGINEER TO BE A SAFETY HAZARD TO TRAFFIC.
- 6) THE CONTRACTOR IS TO VERIFY EXACT LOCATIONS AND DEPTHS OF ALL EXISTING UTILITIES PRIOR TO CONSTRUCTION.
- 7) ANY GRADED AREAS NOT SUBJECT TO FURTHER DISTURBANCE OR CONSTRUCTION TRAFFIC SHALL, WITHIN 14 DAYS OF FINAL GRADING, RECEIVE THE APPLICATION OF THE PROPOSED VEGETATIVE COVER.
- 8) ROAD TO BE KEPT CLEAN OF MUD AND DEBRIS AT ALL TIMES.
- 9) ROADSIDE DRAINAGE TO BE MAINTAINED AT ALL TIMES.
- 10) ALL MATERIALS USED WITHIN THE STATE RIGHT-OF-WAY MUST COMPLY WITH THE CURRENT NEW YORK STATE DEPARTMENT OF TRANSPORTATION SPECIFICATIONS ALONG WITH ANY APPROPRIATE CURRENT NYS DEPARTMENT OF TRANSPORTATION'S STANDARD SHEETS.
- 11) QUALITY CONTROL OF ASPHALT CONCRETE SHALL MEET THE REQUIREMENTS OF SECTION 401 OF THE STANDARD SPECIFICATIONS. ALL ASPHALT PRODUCED AS PART OF SECTION 401 WILL BE PAID AT A FINAL QUANTITY ADJUSTMENT FACTOR OF 1.0. ASPHALT COURSE DEPTHS SHOWN ON THE PLANS ARE COMPACTED DEPTHS.
- 12) NO NIGHT WORK SHALL BE ALLOWED UNLESS APPROVED PRIOR TO START OF PROJECT. ADDITIONAL MAINTENANCE AND PROTECTION OF TRAFFIC MAY BE REQUIRED INCLUDING THE ADDITION OF REFLECTIVE MATERIALS AND LIGHTING.
- 13) NO DIRECT PAYMENT SHALL BE MADE FOR WORK INDICATED ON THE DRAWINGS OR THE SPECIFICATIONS FOR WHICH NO ITEM NUMBER IS INDICATED. THE COST FOR SUCH WORK OR WORK REASONABLY EXPECTED BY THE OWNER TO BE NECESSARY FOR THE COMPLETION OF THE PROJECT SHALL BE INCLUDED IN THE VARIOUS ITEMS OF THE CONTRACT.
- 14) AN EXCAVATION TO BE OPEN OVERNIGHT SHALL BE COMPLETELY ENCLOSED IN FENCING, OR WHERE NECESSARY COVERED WITH STEEL PLATES.
- 14) IF AN EXCAVATION WILL BE 5 FEET DEEP OR DEEPER, A PROTECTION SYSTEM SUCH AS A TRENCH SHIELD SHALL BE USED.

TABLE OF STRUCTURES



DRAINAGE STR. NO.	ROADWAY	STATION	OFFSET DIST. (FT.)	STRUCTURE TYPE	T.G.	INV.
1	WALDEN	47+98.3	33.5' LT.	CATCH BASIN	705.44 705.65	702.36
2	WALDEN	47+98.6	33.5' RT.	CATCH BASIN	705.44 705.58	S. 702.0± N. 702.71±
3	WALDEN	47+98.3	29.2' LT.	EXISTING CATCH BASIN	705.78	S., E. & W. 702.3
4	WALDEN	47+98.6	29.6' RT.	EXISTING CATCH BASIN	705.78 705.69	E. & W. 703.0 S. 702.8, N. 702.7

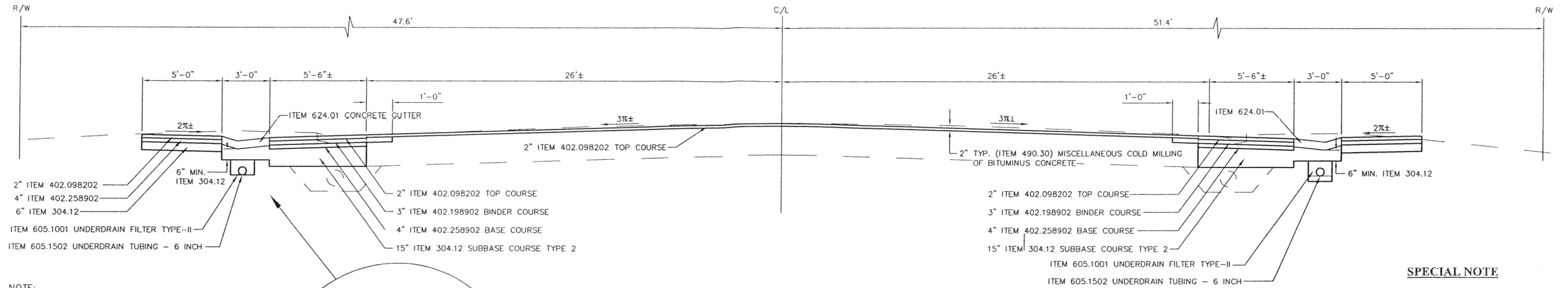
TABLE OF QUANTITIES

ITEM NO.	DESCRIPTION	UNITS	QUANTITIES	
			NEAT	ROUND
201.06	CLEARING AND GRUBBING	L.S.	1	1
203.02	UNCLASSIFIED EXCAVATION AND DISPOSAL	C.Y.	1,660	1,800
203.03	EMBANKMENT IN PLACE	C.Y.	100	110
203.07	SELECT GRANULAR FILL	C.Y.	10	12
206.02	TRENCH AND CULVERT EXCAVATION	C.Y.	155	170
206.05	TEST PIT EXCAVATION	EACH	3	3
304.12	SUBBASE COURSE, TYPE 2	C.Y.	1,038	1,140
402.098202	9.5 F9 TOP COURSE HMA, 80 SERIES COMPACTION	TON	852	890
402.198902	19 F9 BINDER COURSE HMA, 80 SERIES COMPACTION	TON	548	575
402.378902	37.5 F9 BASE COURSE HMA, 80 SERIES COMPACTION	TON	392	410
407.0102	DILUTED TACK COAT	GAL	241	250
490.10	PRODUCTION COLD MILLING OF BITUMINOUS CONCRETE	S.Y.	4,919	5,100
603.881016	CORRUGATED STEEL PIPE ALUMINUM COATED (TYPE II)(2 2/3 X 1/2) 12 INCH 16 GAGE	FT	6	7
603.881216	CORRUGATED STEEL PIPE ALUMINUM COATED (TYPE II)(2 2/3 X 1/2) 18 INCH 16 GAGE	FT	6	7
604.070501	ALTERING DRAINAGE STRUCTURES, LEACHING BASINS AND MANHOLES	EACH	1	1
604.070502	ALTERING DRAINAGE STRUCTURES, LEACHING BASINS AND MANHOLES	EACH	1	1
604.301911	RECTANGULAR DRAINAGE STRUCTURE TYPE S FOR #11 WELDED FRAME	FT	7.2	7.5
605.1001	U.D. FILTER TYPE II	C.Y.	142	150
605.1502	UNDERDRAIN TUBING 6 INCH	FT	1,698	1,750
610.1402	TOPSOIL - ROADSIDE	C.Y.	106	110
610.1602	ESTABLISHING TURF - ROADSIDE	S.Y.	952	1,000
619.01	BASIC WORK ZONE TRAFFIC CONTROL	L.S.	1	1
624.01	CONVENTIONALLY FORM OR MACHINE FORM CONCRETE GUTTERS	S.F.	5,139	5,400
625.01	SURVEY OPERATIONS	L.S.	1	1
645.5102	GROUND MOUNTED SIGN PANELS LESS THAN OR EQUAL TO 30 SF WITH Z-BARS	S.F.	15.00	16.00
645.81	TYPE A SIGN POST	EACH	15	15
647.31	RELOCATE SIGN PANEL, SIGN PANEL ASSEMBLY SIZE I (UNDER 2.8 SQUARE METERS)	EACH	9	9
655.1111	WELDED FRAME & RETICULINE GRATE 11	EACH	2	2
655.1202	MANHOLE FRAME AND COVER	EACH	2	2
663.31	RELOCATE HYDRANT	EACH	2	2
685.11	WHITE EPOXY REFLECTORIZED PAVEMENT STRIPES - 20 MILS	FT	2,123	2,200
685.12	YELLOW EPOXY REFLECTORIZED PAVEMENT STRIPES - 20 MILS	FT	2,315	2,430
688.01	WHITE PREFORMED REFLECTORIZED PAVEMENT STRIPES	FT	122	128
688.04	WHITE PREFORMED REFLECTORIZED PAVEMENT SYMBOLS	EACH	6	6
699.04	MOBILIZATION	L.S.	1	1

RECORD PLAN

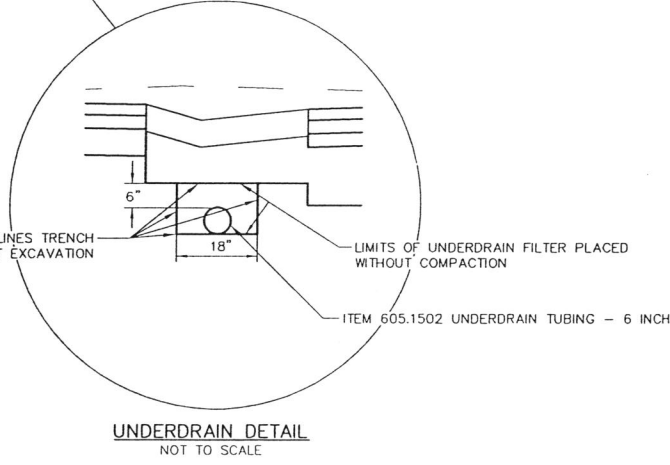
0.00-0.00 DENOTES RECORD INFORMATION

Town of Lancaster ERIE COUNTY NEW YORK CITY JOB NO.: _____		Walden Avenue Left Turn Lane QUANTITIES AND PROJECT NOTES
APPROVED BY: _____ CITY ENGINEER _____ DATE: _____		 GREENMAN-PEDERSEN, INC. CONSULTING ENGINEERS ENGINEERING - SURVEYING - PLANNING SURVEYING SERVICES PROVIDED BY AN ENGINEERING AND SURVEYING LLP 4950 SENECA STREET SUITE 105 BUFFALO, NY 14225 (716) 833-1664 FAX (716) 833-1640
REVISION REVISION AS PER N.Y.S.D.O.T. COMMENTS 07/09/13 GEB REVISION AS PER N.Y.S.D.O.T. COMMENTS 11/4/13 GBJ REVISION AS PER N.Y.S.D.O.T. COMMENTS 06/30/12 SWS		DRAWN: SWS JOB NO.: 2011016 SHEET NO.: 3 OF 9 CHECKED: GEB DATE: JULY 2011 APPROVED: GPP SCALE: NONE PN-1



NOTE:
1' SHEAR STEP SHALL BE INTO BINDER COURSE

NOTE:
DILUTED TACK COAT (ITEM 407.0102) SHALL BE PLACED BETWEEN LIFTS OF ASPHALT PAVEMENT AND ON MILLED SURFACES.



TYPICAL SECTION
NOT TO SCALE

SPECIAL NOTE

PERFORMANCE GRADED (PG) BINDER AND MIX DESIGN LEVEL

SUPERPAVE Hot Mix Asphalt (HMA) **9.5, 19.0 & 25.0** Nominal Maximum Size
Requirements of this note apply to all Section 402 Hot Mix Asphalt (HMA) items under this contract.

PG BINDER

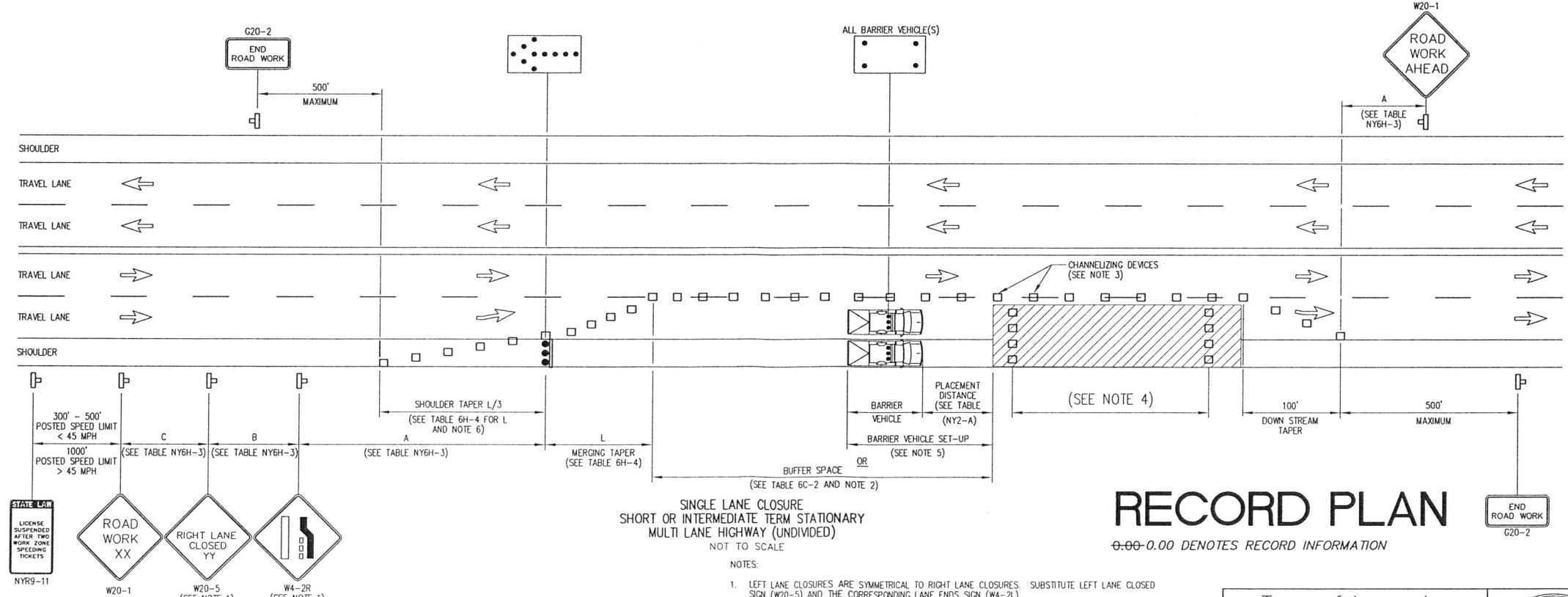
Use a PG 64-22 meeting the requirements of AASHTO M320, Standard Specification for Performance Graded Asphalt Binder for the production of Superpave Hot Mix Asphalt mixtures for this project.

Use of polyphosphoric acid (PPA) to modify the PG binder properties is prohibited. This prohibition also applies to the use of PPA as a cross-linking agent for polymer modification.

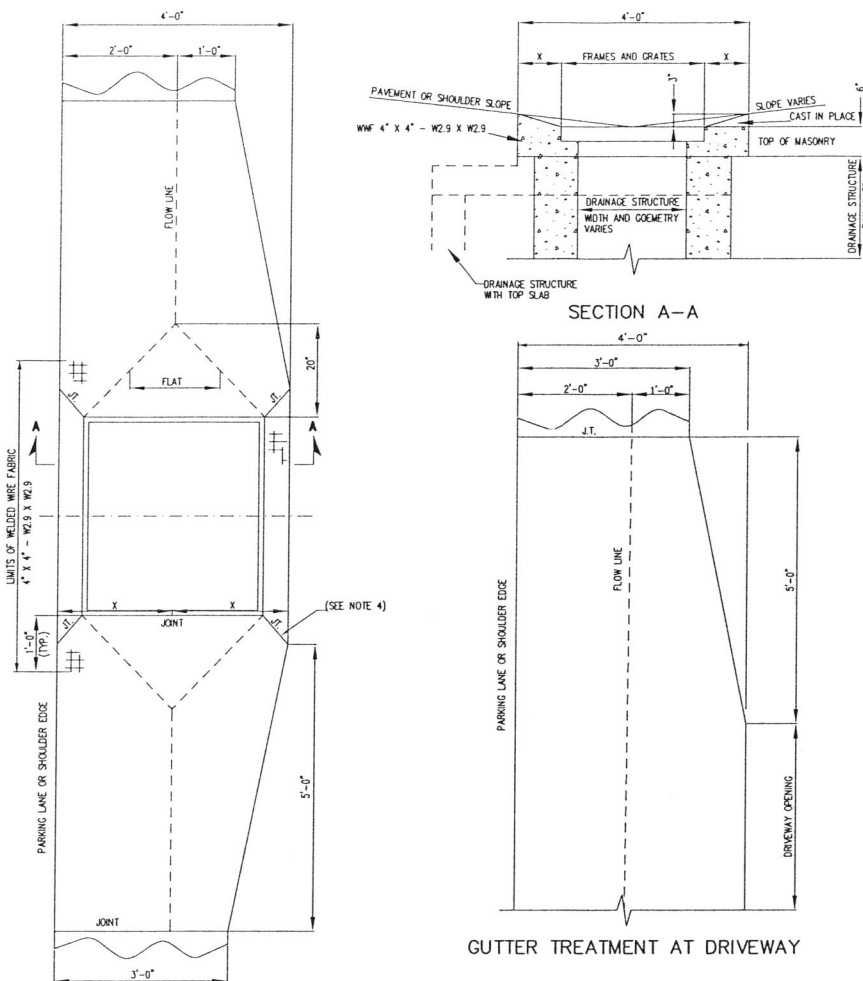
MIX DESIGN

The mixture designs must be developed in accordance with the criteria specified in the Superpave HMA items that are appropriate for an "Estimated Traffic" of greater than 0.3 but less than 30.0 "Million 80 kN FSALs." Under no circumstances shall the PG Binder content in the HMA be less than 5.8% for a 9.5 mm design, 5.2% for a 12.5 mm design, 4.5% for a 19.0 mm design, 4.2% for a 25.0 mm design, or 3.7% for a 37.5 mm design.

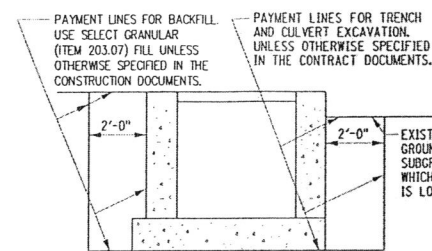
The Contractor should be aware that this is a performance-related specification in which the Contractor is responsible for compaction of the pavement within a specified density range. The Contractor must be prepared to select, operate, and control the paving and compaction equipment, to monitor the results, and to make necessary adjustments (without direction from the Engineer) to achieve the specified density results.



<p>Town of Lancaster ERIE COUNTY NEW YORK TOWN JOB NO.: _____</p>			<p>Walden Avenue At Juniper Boulevard Intersection TYPICAL SECTION & TRAFFIC CONTROL</p>	
<p>APPROVED BY: _____ DATE: _____</p> <p>TOWN ENGINEER: _____ DATE: _____</p>			<p>GPI GREENMAN-PEDERSEN, INC. CONSULTING ENGINEERS ENGINEERING - SURVEYING - PLANNING SURVEYING SERVICES PROVIDED BY G.P. GREENMAN AND SUPERVISOR LUP 4950 GENESSEE STREET SUITE 103 BUFFALO, NY 14225 (716) 853-9884 FAX (716) 853-9884</p>	
<p>RECORD PLAN 07/09/13 GEB</p> <p>REVISED AS PER N.Y.S.D.O.T. COMMENTS 07/23/13 ICCZ/SMS</p> <p>REVISED AS PER N.Y.S.D.O.T. COMMENTS 08/30/12 SMS</p> <p>REVISION DATE BY</p>		<p>DRAWN: _____ JOB NO.: 201016 SHEET NO.: 4 OF 9</p> <p>CHECKED: _____ DATE: JULY 2011</p> <p>APPROVED: _____ SCALE: AS SHOWN SEC-1</p>		



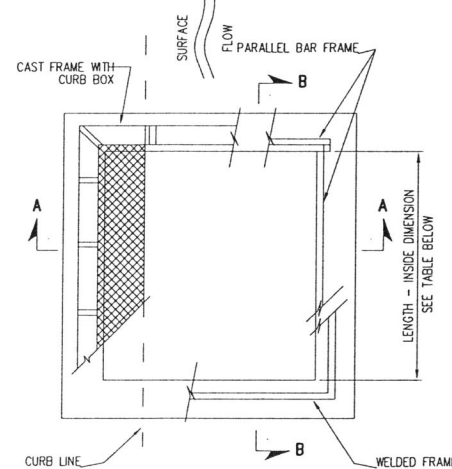
GUTTER TREATMENT AT DRIVEWAY



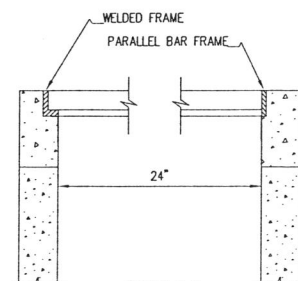
EXCAVATION AND BACKFILL LIMITS AND MATERIALS

NOTE:
SELECT GRANULAR FILL SHALL BE FROM AN APPROVED NYSDOT SOURCE. PLACE FILL AT 6" LIFTS COMPACTED TO 95% OF STANDARD PROCTOR MAXIMUM DENSITY.

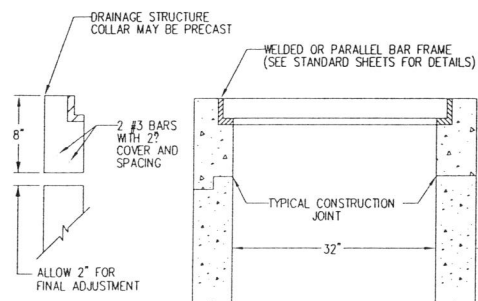
GUTTER TREATMENT AT DRAINAGE STRUCTURES



RECTANGULAR DRAINAGE STRUCTURE TYPE S

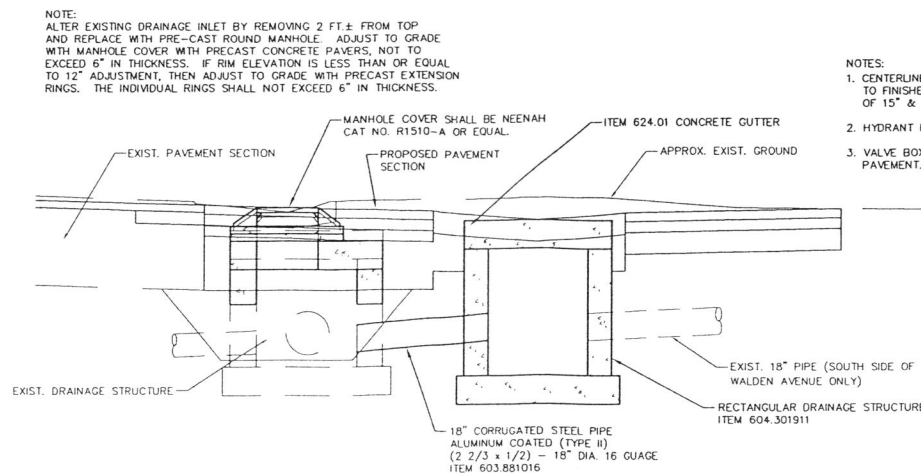


SECTION A-A RECTANGULAR DRAINAGE STRUCTURE TYPE S



SECTION B-B RECTANGULAR DRAINAGE STRUCTURE TYPE S

SEE TABLE AND NOTE 3 ON SHEET 1 OF 4 FOR WALL THICKNESS AND REINFORCEMENT



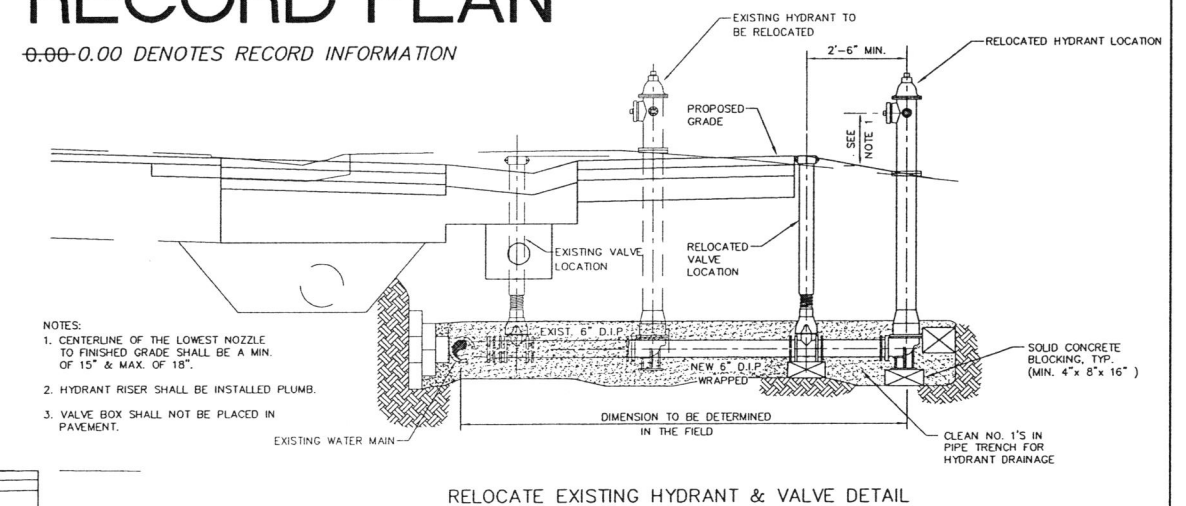
EXISTING STRUCTURE MODIFICATION AND NEW STRUCTURE DETAIL

GENERAL NOTES:

- DRAINAGE STRUCTURES SHALL BE CAST IN PLACE OR PRECAST UNITS. ROUND DRAINAGE STRUCTURES SHALL BE PRECAST ONLY. ALL CAST IN PLACE CONCRETE SHALL BE CLASS A. THE CONTRACTORS SHALL SUBMIT WORKING DRAWINGS FOR REVIEW AND APPROVAL OF ANY CHANGES TO THE STRUCTURES SHOWN ON THE STANDARD SHEETS OR CONTACT PLANS, OTHER THAN MINOR CHANGES APPROVED BY THE ENGINEER. USE OF FLAT SLAB TOPS ON ROUND PRECAST UNITS SHALL REQUIRE SUBMISSION OF WORKING DRAWINGS.
- SEE PLANS FOR ELEVATIONS, DRAINAGE STRUCTURE LOCATIONS, TYPE OF GRATE UTILIZED, LOCATION OF SCOOPS, FORMED INVERTS, Sumps AND DRAINS.
- REINFORCEMENT FOR RECTANGULAR DRAINAGE UNITS (CAST IN PLACE OR PRECAST) BAR REINFORCEMENT INDICATED FOR RECTANGULAR TOP SLABS, RISERS AND BASES SHALL BE GRADE 60. WIRE FABRIC FOR CONCRETE REINFORCEMENT SHALL MEET THE REQUIREMENTS OF 5709-02. RISER REINFORCEMENT SHALL BE PLACED SO IT WILL HAVE A MINIMUM COVER OF 2" BUT NO MORE THAN 4" FROM THE INSIDE FACE. THE REINFORCEMENT SHALL EXTEND COMPLETELY AROUND THE DRAINAGE STRUCTURE RISER AND SHALL BE LAPPED AND TIED. BASE REINFORCEMENT SHALL BE PLACED ABOVE THE MIDPOINT OF SLAB AND SHALL HAVE A MINIMUM CONCRETE COVER OF 2".
- ROUND ALTERNATIVE: WHEN SPECIFIED BY PAYMENT ITEM, THE CONTRACTOR MAY SUBSTITUTE ROUND, PRECAST DRAINAGE STRUCTURES IN PLACE OF RECTANGULAR STRUCTURES USING SIZES INDICATED IN THE "SELECTION TABLE FOR ALTERNATE ROUND DRAINAGE STRUCTURES" ON SHEET 4 OF 4. THE RISER, TOP SLAB, AND BOTTOM SLAB FOR THE ROUND ALTERNATE SHALL BE MANUFACTURED IN ACCORDANCE WITH THE PROVISIONS OF 5706-04 OF THE STANDARD SPECIFICATIONS. WORKING DRAWINGS FOR THE ROUND ALTERNATES SHALL BE SUBMITTED TO THE ENGINEER FOR REVIEW AND APPROVAL, UNLESS THE ROUND ALTERNATE PROPOSED HAS BEEN PREVIOUSLY APPROVED. FOR PREVIOUSLY APPROVED ROUND UNITS THE CONTRACTOR SHALL SUBMIT A COPY OF THE APPROVED DRAWINGS TO THE ENGINEER.
- FORMED INVERTS: FORMED INVERTS, SCOOP AND Sumps SHALL BE PROVIDED AND INCLUDED IN THE PRICES BID FOR DRAINAGE STRUCTURES CALLED FOR IN THE CONTRACT DOCUMENTS. WHEN NON-CIRCULAR PIPES ARE USED, THE FORMED INVERT AND SUMP DETAILS SHALL BE MODIFIED TO FIT THE INVERTS.
- GRATES: CAST FRAMES MAY HAVE EITHER RECTILINE OR PARALLEL BAR GRATES, AND WELDED FRAMES MAY HAVE EITHER RECTILINE OR RECTANGULAR GRATES. IF NO GRATE IS SPECIFIED IN THE CONTRACT DOCUMENTS, THE CONTRACTOR MAY FURNISH EITHER TYPE. GRATES SHALL BE INSTALLED SO THAT THE LENGTH OF THE GRATE IS PARALLEL TO THE SURFACE FLOW.
- WALL OPENINGS: RECTANGULAR DRAINAGE STRUCTURES SHOWN ON THESE STANDARD SHEETS SHOULD NEVER HAVE CORNER PIPE ENTRIES. IF PIPE ALIGNMENT WOULD REQUIRE A CORNER ENTRY, USE A ROUND DRAINAGE STRUCTURE OR USE A SPECIAL DRAINAGE STRUCTURE. ALL WALL OPENINGS SHALL BE FORMED COMPLETELY THROUGH THE WALL SECTION. CIRCULAR WALL OPENINGS SHALL BE FORMED FOR EACH CIRCULAR PIPE ENTERING PERPENDICULAR TO THE WALL. WHEN NON-CIRCULAR PIPES ARE SPECIFIED, OR ROUND PIPE ENTRIES ARE SKewed, RECTANGULAR OPENINGS MAY BE USED. THE CLEARANCE BETWEEN THE OUTSIDE OF THE PIPE AND THE OPENING SHALL BE AT LEAST 2" BUT NO MORE THAN 3". THIS CLEARANCE SHALL BE MEASURED BETWEEN THE OUTSIDE OF THE PIPE AND NEAREST POINT ON THE RECTANGULAR OPENING. IF A CORNER HAS PIPE ENTRIES ON BOTH SIDES, AND THERE IS LESS THAN 2" BETWEEN EITHER OPENING AND THE CORNER, THEN THAT SECTION OF THE DRAINAGE STRUCTURE MUST HAVE 8" THICK WALLS.
- MONOLITHIC AND INTEGRAL BASES MAY HAVE A MAXIMUM VERTICAL DRAFT OF 1/2" ON ALL INTERIOR DIMENSIONS. TO FACILITATE FORM REMOVAL, FOR WALL OPENINGS THAT EXTEND THE FULL WIDTH OR LENGTH OF THE STRUCTURE, THE MINIMUM CLEARANCE BETWEEN THE OUTSIDE OF THE PIPE AND THE WALL OPENING SHALL BE 1 1/2".
- FINISHING PIPE ENTRIES: THE BELLS OF CONCRETE PIPE SHALL BE CUT OFF AT EVERY PIPE ENTRY WHERE THE BELL ENTERS A STRUCTURE. CONNECTIONS BETWEEN THE STRUCTURE AND PIPE SHALL BE MADE BY EITHER USING A RESILIENT CONNECTOR MEETING THE REQUIREMENTS OF ASTM C1478M OR BY COMPLETELY FILLING THE SPACE AROUND EACH PIPE WITH MORTAR FOR CONCRETE MASONRY, CONCRETE GROUTING MATERIAL, OR CONCRETE REPAIR MATERIAL. THE CONTRACTOR MAY USE ALTERNATE METHODS FOR SEALING THE SPACE AROUND THE PIPE, CONTINGENT UPON SATISFACTORY RESULTS BEING OBTAINED.
- TOP SLAB AND OR FRAME AND GRATE ADJUSTMENT A MINIMUM OF 1/2" OF BEDDING SHALL BE PLACED BETWEEN RISER AND PRECAST TOP SLABS. GRADE ADJUSTMENT FOR TOP SLABS AND/OR FRAME AND GRATE OF UP TO 2 1/2" SHALL BE MADE WITH BEDDING MATERIAL MEETING THE REQUIREMENTS OF MORTAR FOR CONCRETE MASONRY, CONCRETE GROUTING MATERIALS OR CONCRETE REPAIR MATERIAL. GRADE ADJUSTMENT FOR TOP SLABS AND/OR FRAME AND GRATES OF UP TO 6" SHALL BE MADE WITH COMBINATION OF PRECAST CONCRETE PAVERS AND BEDDING MATERIALS. GRADE ADJUSTMENT FOR TOP SLABS AND/OR FRAME AND GRATES OF UP TO 1'-0" SHALL BE MADE WITH CAST-IN-PLACE CONCRETE OR A COMBINATION OF PRECAST CONCRETE ADJUSTMENT ELEMENTS AND BEDDING MATERIALS. ALTERNATELY, GRADE ADJUSTMENTS FOR FRAMES AND GRATES OF UP TO 2" MAY BE MADE WITH RECYCLED RUBBER ELEMENTS OR UP TO 3" WITH HDPE ELEMENTS. RECYCLED RUBBER AND HDPE ELEMENTS SHALL BE PRODUCTS APPROVED BY THE MATERIALS BUREAU AND SHALL BE INSTALLED PER MANUFACTURER'S INSTRUCTIONS. THE CONTRACTOR MAY USE ALTERNATE METHODS OF GRADE ADJUSTMENT, CONTINGENT UPON SATISFACTORY RESULTS BEING OBTAINED.
- MANHOLE STEPS SHALL BE REQUIRED IN ALL DRAINAGE STRUCTURES DEEPER THAN 4'-0".
- CORBELED OR CONICAL RISER SECTIONS AND FLAT SLAB REDUCERS. ROUND PRECAST DRAINAGE STRUCTURES OR MANHOLES WHEN ALLOWED OR SPECIFIED MAY BE FITTED WITH CONCENTRIC OR ECCENTRIC CONICAL SECTIONS TO REDUCE THEIR DIAMETERS, PROVIDED THE USE OF SUCH DEVICES IS COMPATIBLE WITH THE DRAINAGE SYSTEM DESIGN. THE CONTRACTOR SHALL SUBMIT WORKING DRAWINGS FOR REVIEW AND APPROVAL OF FLAT SLAB REDUCERS FOR ROUND OR RECTANGULAR STRUCTURES. A WALL SECTION WITH A HEIGHT LESS THAN 6" BETWEEN THE TOP OF THE HIGHEST PIPE ENTRY AND THE BOTTOM OF A CONICAL SECTION OR FLAT SLAB REDUCER SHALL NOT BE PERMITTED.
- WHEN PIPE LOCATIONS PROVIDE FOR LESS THAN 8" BETWEEN THE TOP OF THE UPPERMOST PIPE AND THE TOP OF THE RISER AND THE STRUCTURE MAY BE SUBJECTED TO HIGHWAY LOADS, CONTACT STRUCTURES DIVISION FOR A SPECIAL DESIGN.
- WHEN SITE CONDITIONS REQUIRE A DRAINAGE STRUCTURE TO BE INSTALLED TO A DEPTH GREATER THAN THAT SHOWN IN THE CONTRACT DOCUMENTS, AN INSTALLATION TOLERANCE OF 8" IS PERMITTED WITHOUT REQUIRING AN INCREASE IN WALL THICKNESS OR REINFORCING STEEL AS REQUIRED BY THE DRAINAGE STRUCTURE REINFORCEMENT TABLE.
- THE PAY ITEMS FOR DRAINAGE STRUCTURES SPECIFY THE STRUCTURE AND FRAME. DRAINAGE STRUCTURE ITEM NUMBERS: RECTANGULAR DRAINAGE STRUCTURE WITH ROUND OPTION ITEM 604.30XXYY RECTANGULAR DRAINAGE STRUCTURE WITH ROUND OPTION ITEM 604.31XXYY RECTANGULAR DRAINAGE STRUCTURE WITH CONCRETE CAP ITEM 604.32XXYY SEE TABLES BELOW FOR XX AND YY CODES. EXAMPLE: 604.300706 - RECTANGULAR STRUCTURE TYPE G WITH TYPE 6 WELDED FRAME (SEE SHEET 4 OF 4 FOR ITEM NUMBERS FOR STRUCTURE TYPE Q, R, S, T, AND U)

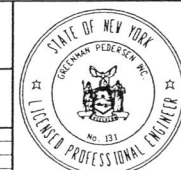
RECORD PLAN

0.00-0.00 DENOTES RECORD INFORMATION

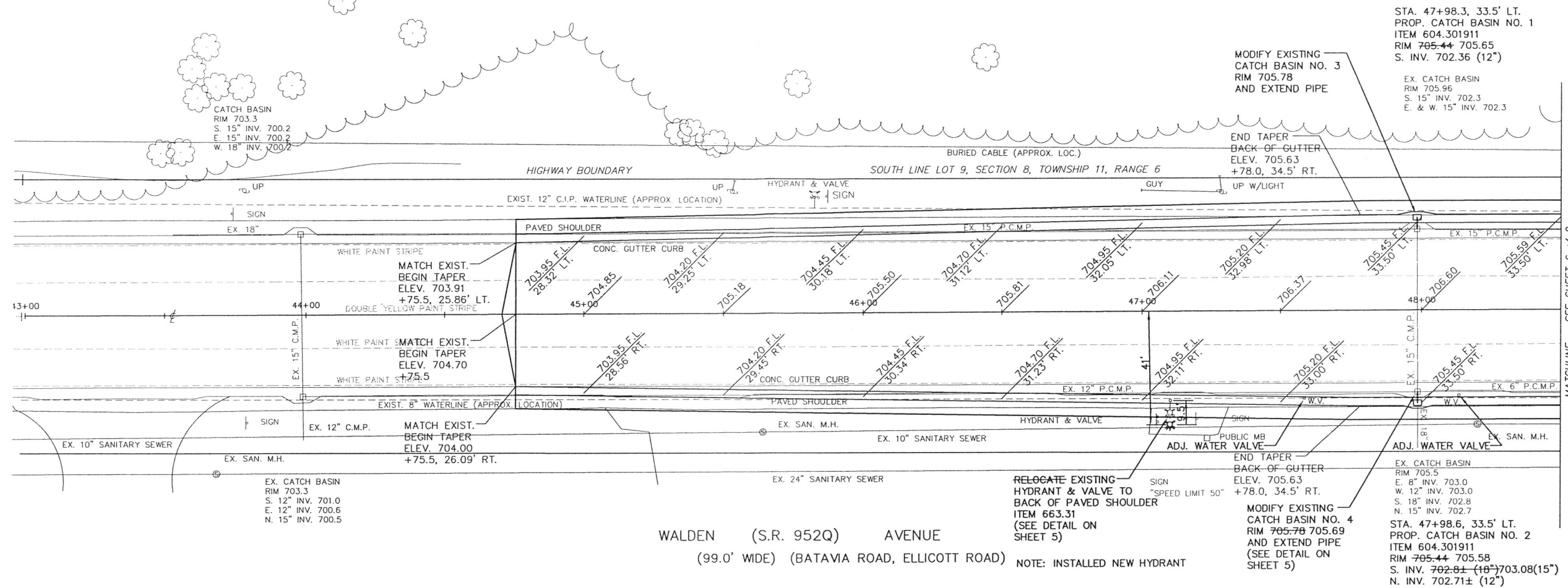


RELOCATE EXISTING HYDRANT & VALVE DETAIL

Town of Lancaster		ERIE COUNTY NEW YORK	
APPROVED BY:	CITY ENGINEER	DATE:	
REVISION	DATE	BY	
REVISD AS PER N.Y.S.D.O.T. COMMENTS	01/08/13	GEB	
REVISD AS PER N.Y.S.D.O.T. COMMENTS	01/03/13	KCZ/SWS	
REVISION	08/30/12	SWS	

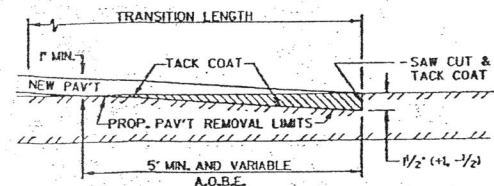
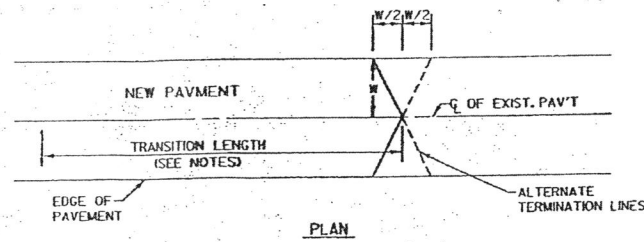


Walden Avenue At Juniper Boulevard Intersection	
DRAINAGE DETAILS	
GREENMAN-PEDERSEN, INC. CONSULTING ENGINEERS ENGINEERING - SURVEYING - PLANNING 4850 DENVER STREET SUITE 1600 - BOULDER, CO 80504 (303) 443-4844 FAX (303) 443-4840	
DATE: AUGUST 2012	SCALE: NONE
JOB NO.: 2011016	SHEET NO. 5 OF 9
DT-1	



WALDEN (S.R. 952Q) AVENUE
(99.0' WIDE) (BATAVIA ROAD, ELLICOTT ROAD)

NOTE: INSTALLED NEW HYDRANT



BUTT JOINTS
N.T.S.

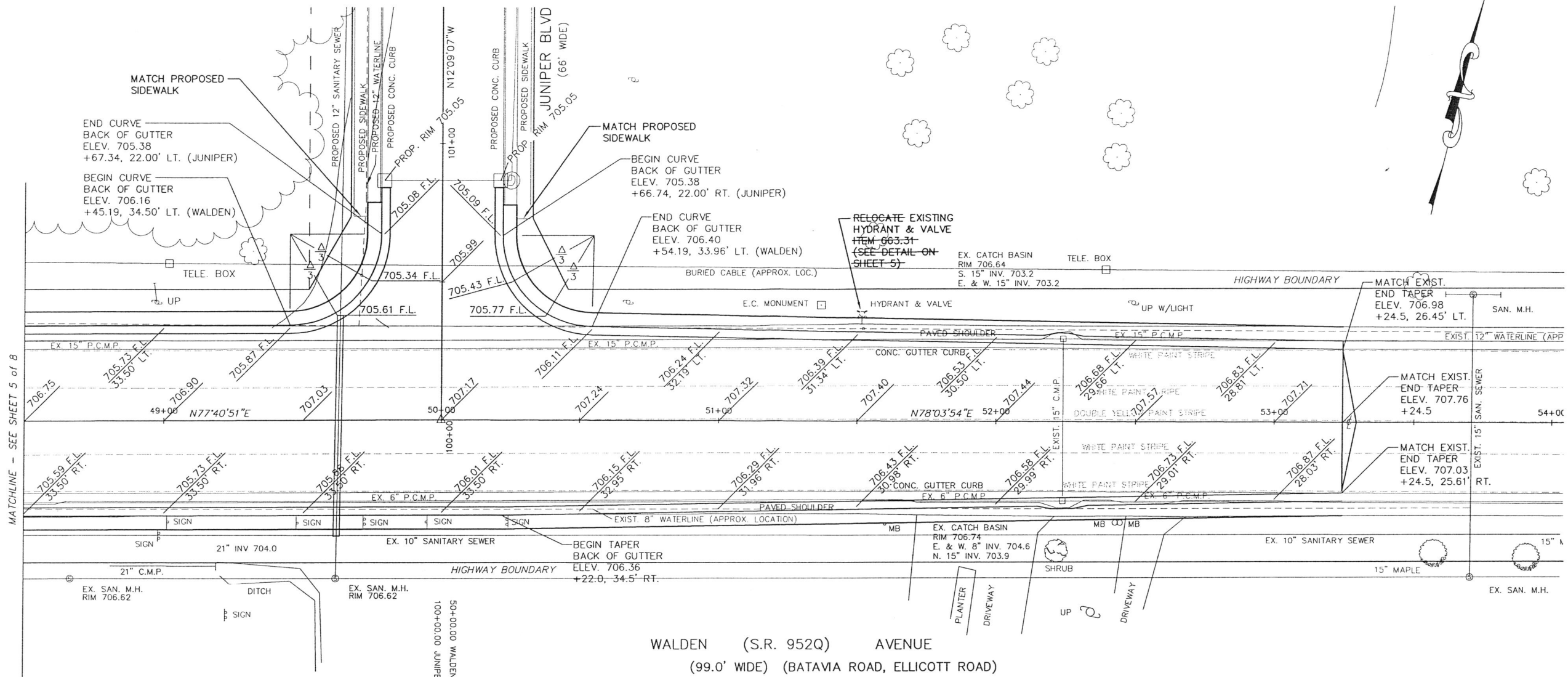
- NOTES:
- THE LENGTH OF TRANSITION WILL BE DETERMINED BY EXISTING GRADIENTS, DEPTH OF NEW ASPHALT COURSES AND A.O.B.E. AREAS THAT ARE OVEREXCAVATED OR ROUGH CUT SHALL BE BROUGHT UP TO 'PROPOSED PAVT' REMOVAL LIMITS' WITH AN ACCEPTABLE LEVELING COURSE. TACK COATS SHALL MEET THE REQUIREMENTS OF MATERIAL DESIGNATION 702-90.
 - PAYMENT FOR EXCAVATION, DISPOSAL, SAWING PAVT, TACK COATS AND REGRADING SUBBASE COURSES WITHIN THE SLOTTED AREAS SHALL BE INCLUDED IN THE PRICES BID FOR THE VARIOUS ASPHALT CONCRETE ITEMS IN THE CONTRACT.

RECORD PLAN

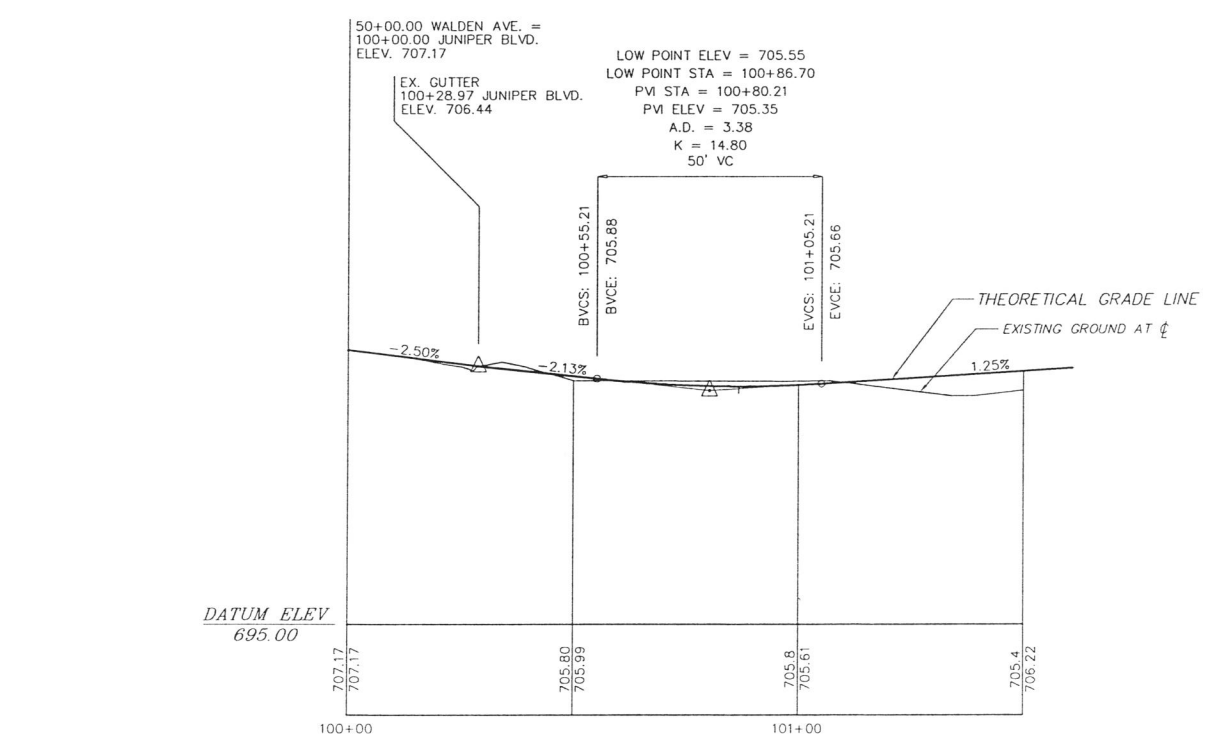
0-00-0.00 DENOTES RECORD INFORMATION

NOTE:
GUTTER WIDTH AT ALL DRIVEWAY OPENINGS SHALL BE 4'-0" AS PER STANDARD SHEET 624-01.

Town of Lancaster ERIE COUNTY NEW YORK TOWN JOB NO.: _____			Walden Avenue At Juniper Boulevard Intersection PLAN	
APPROVED BY: _____ TOWN ENGINEER _____ DATE: _____	RECORD PLAN 07/09/13 GEB REVISED AS PER N.Y.S.D.O.T. COMMENTS 09/03/13 KCZ/SWS REVISED AS PER N.Y.S.D.O.T. COMMENTS 09/15/12 SWS REVISION DATE BY: _____			GREENMAN-PEDERSEN, INC. CONSULTING ENGINEERS ENGINEERING • SURVEYING • PLANNING <small>CERTIFIC SERVICES PROVIDED BY AN ENGINEER AND SURVEYOR LLP</small> 4950 GENESSEE STREET SUITE 100 BUFFALO, NY 14220 (716) 833-1044 FAX (716) 833-1040
<small>NOTE: UNAUTHORIZED ALTERATION OR ADDITION TO THIS DOCUMENT IS A VIOLATION OF SECTION 7209 PROVISION 2 OF THE NEW YORK STATE EDUCATION LAW.</small>		DRAWN: _____ JOB NO.: 2011016 SHEET NO.: 6 OF 9 CHECKED: _____ DATE: JULY 2011 APPROVED: _____ SCALE: AS SHOWN PL-1		



WALDEN (S.R. 952Q) AVENUE
(99.0' WIDE) (BATAVIA ROAD, ELLICOTT ROAD)



PROFILE - JUNIPER BOULEVARD
SCALE: 1" = 20' HORIZ., 1" = 4' VERT.

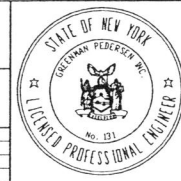
NOTE:
THE NEW 12" WATERLINE ALONG JUNIPER BLVD. WILL BE IN THE TOWN OF LANCASTER MAINTENANCE JURISDICTION.
THE NEW 12" SANITARY SEWER CROSSING WALDEN AVENUE WILL BE IN ERIE COUNTY SEWER DISTRICT #4 MAINTENANCE JURISDICTION.

NOTE:
GUTTER WIDTH AT ALL DRIVEWAY OPENINGS SHALL BE 4'-0" AS PER STANDARD SHEET 624-01.

RECORD PLAN

±0.00-0.00 DENOTES RECORD INFORMATION

Town of Lancaster	
ERIE COUNTY	NEW YORK
TOWN JOB NO. _____	
APPROVED BY:	DATE:
TOWN ENGINEER	DATE:
RECORD PLAN	07/09/13 GEB
REVISED AS PER N.Y.S.D.O.T. COMMENTS	01/03/13 BAJ
REVISED AS PER N.Y.S.D.O.T. COMMENTS	08/15/12 SMS
REVISION	DATE BY
NOTE: UNAUTHORIZED ALTERATION OR ADDITION TO THIS DOCUMENT IS A VIOLATION OF SECTION 7209 PROVISION 2 OF THE NEW YORK STATE EDUCATION LAW.	

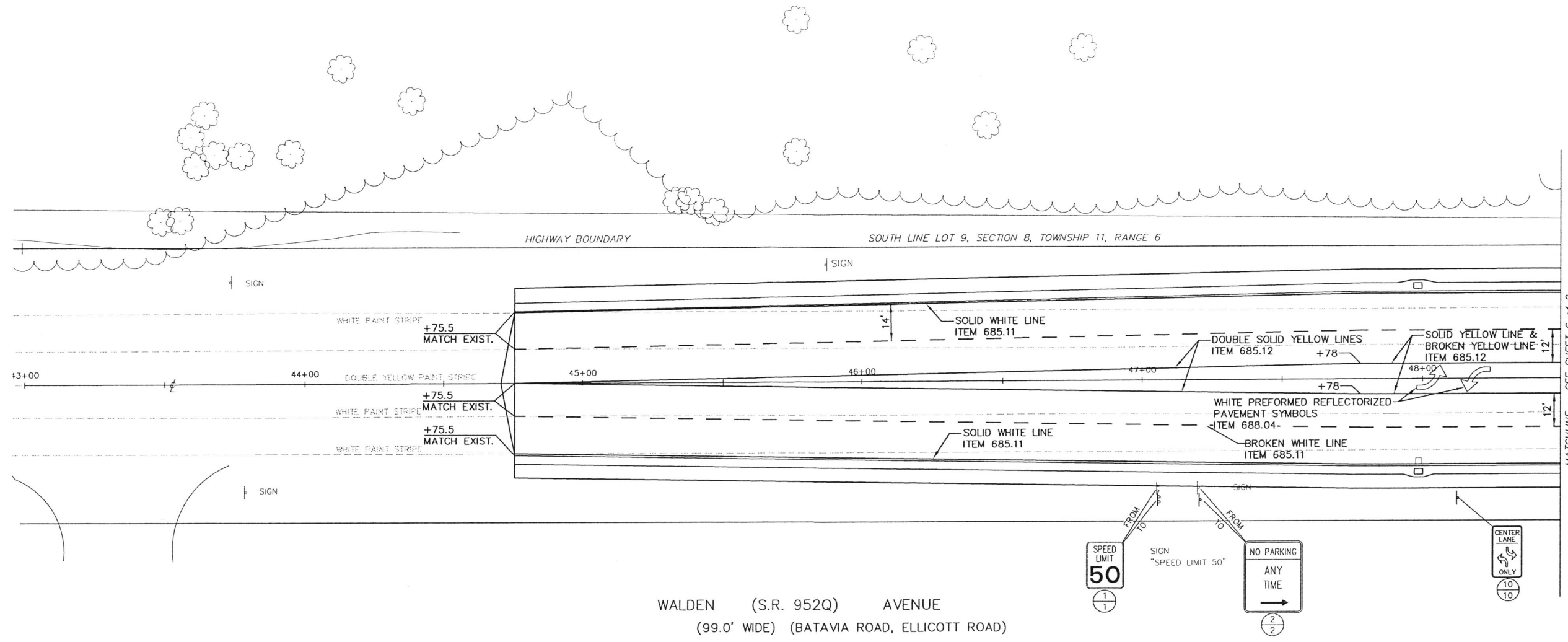


Walden Avenue
At Juniper Boulevard Intersection

PLAN AND PROFILE

GPI
GREENMAN-PEDERSEN, INC.
CONSULTING ENGINEERS
ENGINEERING • SURVEYING • PLANNING
SURVEYING SERVICES PERFORMED BY AN ENGINEER AND SURVEYOR L.P.
4400 KENNESAW STREET SUITE 100 BUFFALO, NY 14225
(716) 633-6844 FAX (716) 633-6940

DRAWN: _____ JOB NO.: 2011016 SHEET NO.: 7 OF 9
CHECKED: _____ DATE: JULY 2011
APPROVED: _____ SCALE: AS SHOWN PL-2



WALDEN (S.R. 952Q) AVENUE
(99.0' WIDE) (BATAVIA ROAD, ELLICOTT ROAD)

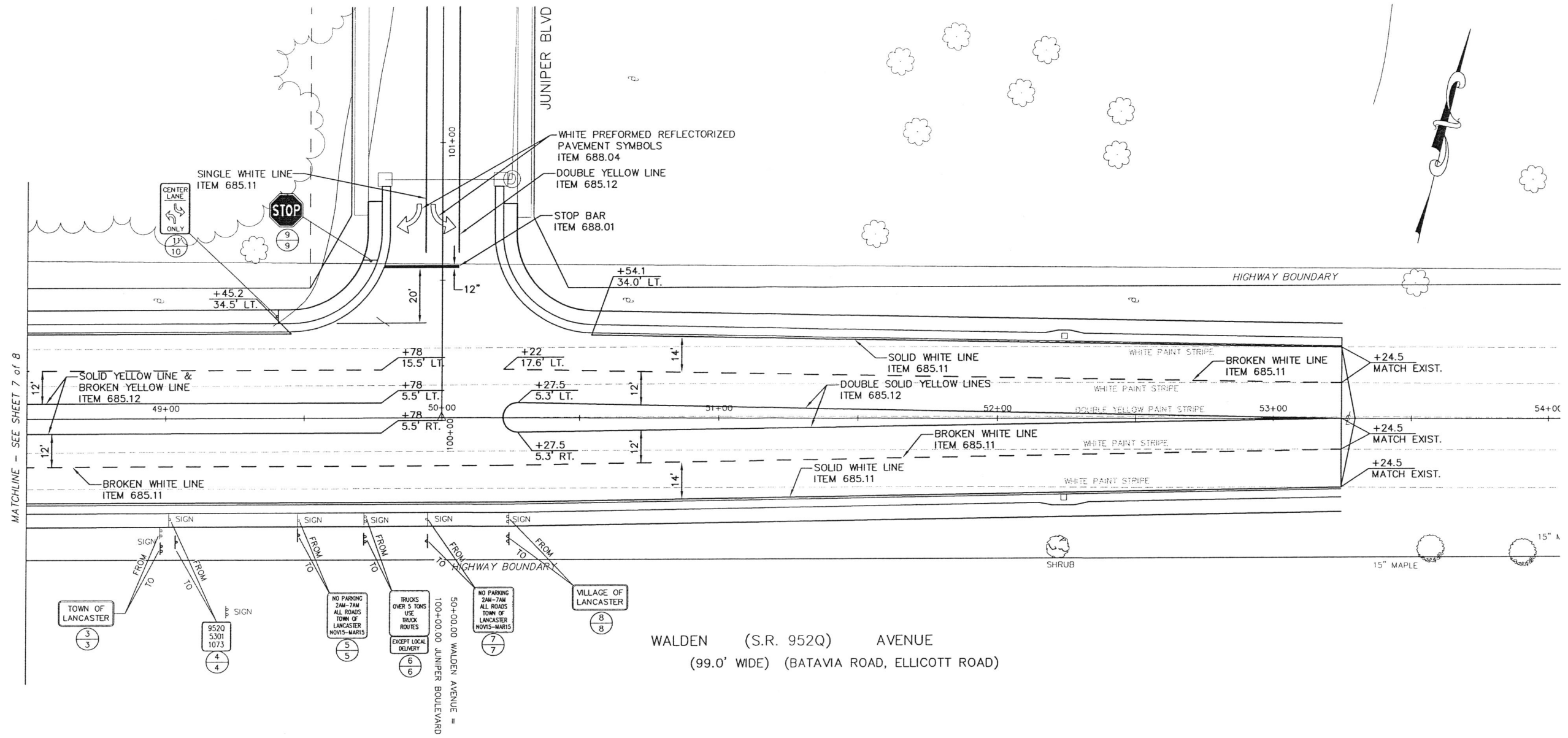
SIGN TEXT DATA TABLE

TEXT NO.	TEXT	M.U.T.C.D. NO.	LOCATION	MOUNT	SIGN AREA	ITEM NO.	ITEM 645.01		
							PER SITE	TOTAL	
1		-	1	GROUND	-	647.31	2	2	
2		-	2	GROUND	-	647.31	1	1	
3		-	3	GROUND	-	647.31	2	2	
4		-	4	GROUND	-	647.31	1	1	
5		-	5	GROUND	-	647.31	1	1	
6		-	6	GROUND	-	647.31	2	2	
7		-	7	GROUND	-	647.31	1	1	
8		-	8	GROUND	-	647.31	2	2	
9		R1-1	9	GROUND	36"x36" (9 SQ. FT.)	645.5102	2	2	
10		R3-9b	10	GROUND	24"x36" (6 SQ. FT.) 2 EA = 12 SQ. FT.	645.5102	1	2	
							(21 SQ. FT.)		16 EA

LEGEND

LOCATION NO.] PROPOSED SIGN
TEXT NO.

Town of Lancaster ERIE COUNTY NEW YORK TOWN JOB NO.: _____			Walden Avenue At Juniper Boulevard Intersection SIGNING AND STRIPING PLAN	
APPROVED BY: _____ TOWN ENGINEER DATE: _____	RECORD PLAN 07/09/13 GJB REVISED AS PER N.Y.S.D.O.T. COMMENTS 01/03/13 BAJ REVISED AS PER N.Y.S.D.O.T. COMMENTS 08/30/12 SHS REVISION DATE BY			GREENMAN-PEDERSEN, INC. CONSULTING ENGINEERS ENGINEERING • SURVEYING • PLANNING SURVEYING SERVICES PROVIDED BY OR THROUGH AND SUPERVISED BY 1450 GENESSEE STREET SUITE 105 BUFFALO, NY 14203 (716) 833-4844 FAX (716) 833-4846
NOTE: UNAUTHORIZED ALTERATION OR ADDITION TO THIS DOCUMENT IS A VIOLATION OF SECTION 7209 PROVISION 2 OF THE NEW YORK STATE EDUCATION LAW		JOB NO.: 2011016 DATE: JULY 2011 SCALE: 1"=20' SHEET NO.: 8 OF 8 SS-1		



WALDEN (S.R. 952Q) AVENUE
 (99.0' WIDE) (BATAVIA ROAD, ELLICOTT ROAD)

MATCHLINE - SEE SHEET 7 of 8

Town of Lancaster ERIE COUNTY NEW YORK	
TOWN JOB NO. _____	
APPROVED BY:	DATE:
TOWN ENGINEER _____	DATE: _____
RECORD PLAN	07/09/13 BAJ
REVISED AS PER N.Y.S.D.O.T. COMMENTS	07/23/13 BAJ
REVISED AS PER N.Y.S.D.O.T. COMMENTS	08/30/12 SWS
REVISION	DATE BY
NOTE: UNAUTHORIZED ALTERATION OR ADDITION TO THIS DOCUMENT IS A VIOLATION OF SECTION 7209 PROVISION 2 OF THE NEW YORK STATE EDUCATION LAW.	



Walden Avenue
 At Juniper Boulevard Intersection
 SIGNING AND STRIPING PLAN

GPI
 GREENMAN-PEDERSEN, INC.
 CONSULTING ENGINEERS
 ENGINEERING • SURVEYING • PLANNING
 SURVEYING SERVICES PERFORMED BY G.P. ENGINEERING AND SURVEYING LLP
 1450 GENESEE STREET SUITE 105 BUFFALO, NY 14225
 (716) 833-1644 FAX (716) 833-1646

DRAWN: _____ JOB NO.: 2011016 SHEET NO.: 9 OF 9
 CHECKED: _____ DATE: JULY 2011
 APPROVED: _____ SCALE: 1"=20' SS-2